

2023/2024 المعدل SEN امتحان نهاية الفصل الدراسي الثاني لطلاب

End of Term 2 SEN Students Modified Exam 2023/2024

	Student Number	رقم الطالب
	Student Name	أسم الطالب
Sultan Bin Zayed School	School	المدرسة
6	Class	سنة
General/ العام	Stream	المسار
Science/ العلوم	Subject	المادة
Inspire		

يملأ هذا الجدول بدقة تامة من قبل لجنة التقدير. This table must be filled in accurately by the marking committee.

المراجع Reviewer		Marker 2		Marker 1		السؤال رقم Question No.	الأجزاء Parts
الاسم		الاسم		الاسم			
Name	Mark	Name	Mark	Name	Mark		
						Q. (1)	1 الأول
						Q. (2)	
						Q. (3)	
						Q. (4)	
						Q. (5)	
						Total 1 مجموع الجزء (40)	

						Q. (6-20)	2 لثاني
						Total 2 مجموع الجزء (60)	

**Part 1****الجزء ١**

a) Compare animal and plant cells. Add “Yes” or “No” to show the parts that are alike and different.


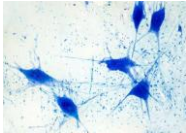
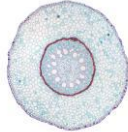


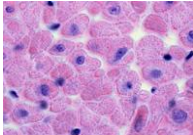



Cell Part	Animal Cell	Plant Cell
cell membrane		
nucleus		
chloroplasts		
mitochondria		
cell wall		
cytoplasm		

b) Match the organelles to their function.

Organelle	Function
____1. cell wall	A. rigid structure that protects plant cells
____2. ribosomes	B. controls what enters and exits the cell
____3. chloroplasts	C. use energy from food to produce ATP
____4. vacuoles	D. store water, food, and wastes
____5. cell membrane	E. make proteins
____6. mitochondria	F. use sunlight to make food

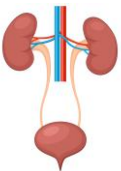

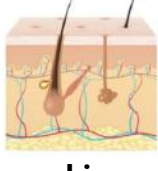

classify each image as a tissue, organ, or organ system. Write in the below table.

Tissue	Organ	Organ System

 <b>heart</b>	 <b>nervous</b>	 <b>ground</b>
 <b>leaves</b>	 <b>kidney</b>	 <b>heart</b>
 <b>shoot</b>	 <b>digestive</b>	 <b>roots</b>

a) Identify the system that removes each type of waste from the body. Write in the below table

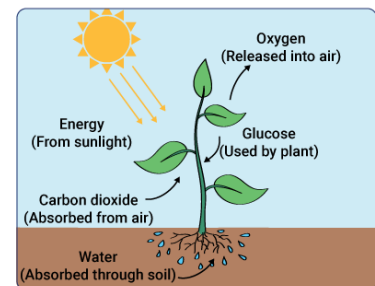
<u>Carbon Dioxide</u>	<u>Liquid Waste</u>	<u>Solid Waste</u>	<u>Extra Salt</u>

			
<b>excretory system</b>	<b>digestive system</b>	<b>skin integumentary system</b>	<b>respiratory system</b>

b) This image shows the process of photosynthesis.

Use this image and the word bank to describe how energy is obtained and how waste is removed from plants.

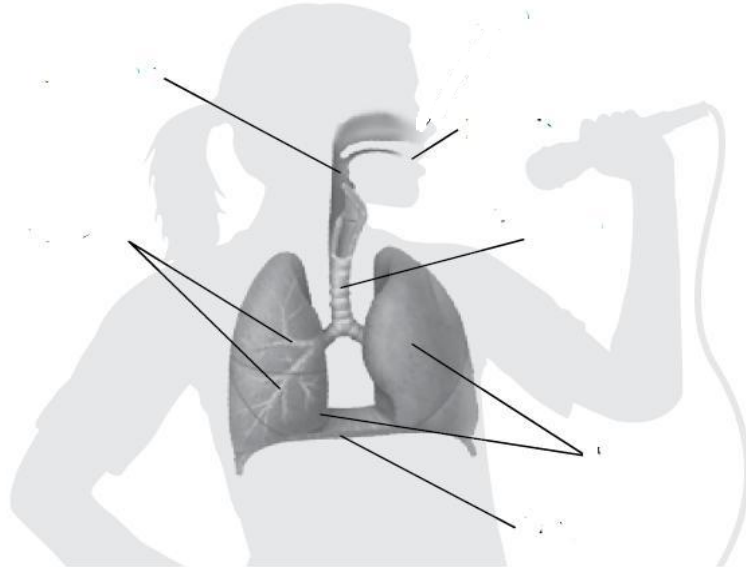
Word Bank				
stomata	light	leaves	energy	phloem
roots	glucose	xylem	waste	oxygen



During photosynthesis, plants make their own food in organs called \_\_\_\_\_.

The **xylem** carries water from the \_\_\_\_\_ to the rest of the plant.

a) Use the word bank to label the parts of the respiratory system.



Word Bank						
diaphragm	mouth	trachea	lungs	bronchus	pharynx	bronchiole

b) Classify the cell organelles based on their function. Write each organelle to the correct Column.

Endoplasmic Reticulum

Mitochondria

Chloroplasts

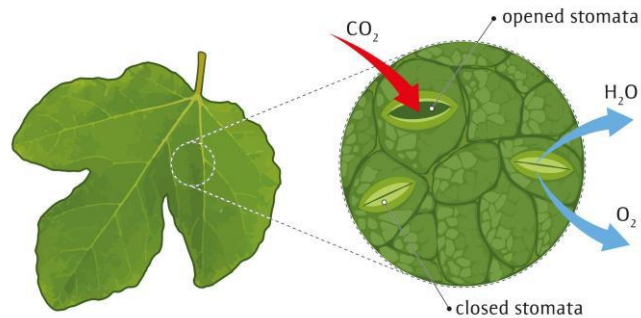
Nucleus

Golgi Apparatus

Ribosomes

Controlling the Cell	Powering the Cell	Transporting Materials

a) Use the diagram below and answer the following questions.






- i. Name the process that uses  $\text{CO}_2$  in the plant cells.

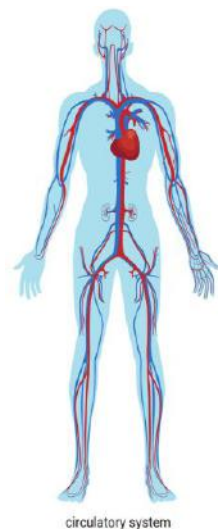
--

- ii. Name the waste gas produced as a result of this process and describe how the gas exits the plant.

--	--

b) Choose the options below to show the level of organization in the circulatory system.

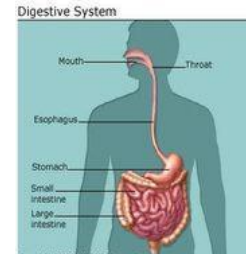


<div style="display: inline-block; width: 150px; height: 40px; background-color: #d9e1f2; border: 1px solid black; position: relative;"> <div style="position: absolute; left: -10px; top: 0; bottom: 0; width: 10px; height: 100%; border-left: 1px solid black; border-right: 1px solid black;"></div> <div style="position: absolute; right: -10px; top: 0; bottom: 0; width: 10px; height: 100%; border-left: 1px solid black; border-right: 1px solid black;"></div> </div>	<div style="display: inline-block; width: 150px; height: 40px; background-color: #d9e1f2; border: 1px solid black; position: relative;"> <div style="position: absolute; left: -10px; top: 0; bottom: 0; width: 10px; height: 100%; border-left: 1px solid black; border-right: 1px solid black;"></div> <div style="position: absolute; right: -10px; top: 0; bottom: 0; width: 10px; height: 100%; border-left: 1px solid black; border-right: 1px solid black;"></div> </div>	<div style="display: inline-block; width: 150px; height: 40px; background-color: #d9e1f2; border: 1px solid black; position: relative;"> <div style="position: absolute; left: -10px; top: 0; bottom: 0; width: 10px; height: 100%; border-left: 1px solid black; border-right: 1px solid black;"></div> <div style="position: absolute; right: -10px; top: 0; bottom: 0; width: 10px; height: 100%; border-left: 1px solid black; border-right: 1px solid black;"></div> </div>
--	--	--

<b>Part 2</b>	<b>2 الجزء</b>
---------------	----------------

6. Group of organs with similar functions.

A. organ system  
 B. cells  
 C. organ  
 D. tissue



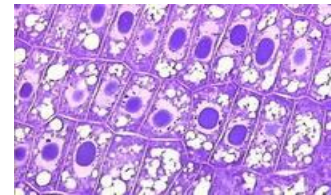
7. Group of tissues with similar functions.

A. cell  
 B. organ system  
 C. organ  
 D. tissue



8. This is a example of .....

A. cell  
 B. tissue  
 C. organ  
 D. organ system



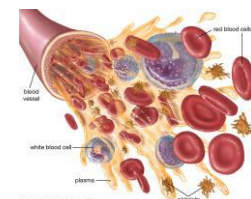
9. This is a example of .....

A. organ  
 B. organ system  
 C. tissue  
 D. cell



10. It gives the body its shape, allows movement, makes blood cells, provides protection for organs.

A. bone organ  
 B. ligaments  
 C. tendon



D. stores minerals

11. When a muscle relaxes, the cells of muscle becomes

- A. shorter
- B. back to its original length
- C. no change
- D. not sure



12. The bone marrow material is a

- A. soft, spongy material in the center of the bones.
- B. rough, spongy material in the center of the bones
- C. soft, hard material in the center of the bones
- D. flat, rough material in the center of the bones



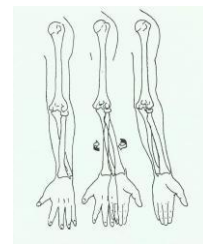
13. What supports the structure of your body?

- A. nervous system
- B. digestive system
- C. muscle system
- D. skeletal system



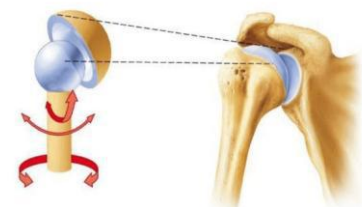
14. Allows bones to rotate.

- A. not sure
- B. ball and socket
- C. pivot
- D. hinge



15. Allows bones to move and rotate in nearly all directions.

- A. not sure
- B. ball and socket
- C. pivot
- D. hinge





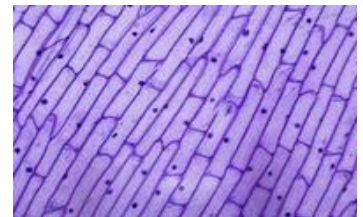
16. What is this structure?

- A. Mitochondria
- B. Nucleus
- C. Chloroplast
- D. Vacuole



17. A \_\_\_\_\_ organism is made of many cells, each specialized to do certain jobs.

- A. Eukaryotic
- B. Prokaryotic
- C. Multicellular
- D. Unicellular



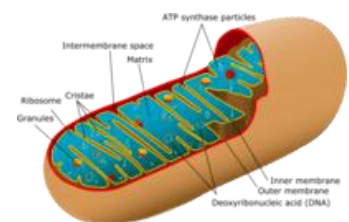
18. This fluid in the cell is where the organelles are found. It contains water and chemicals the cell needs.

- A. Blood
- B. Vacuole
- C. Plasma
- D. Cytoplasm



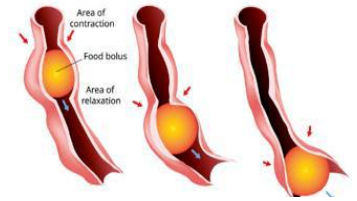
19. These organelles convert the energy in food molecules to a form the cell can use.

- A. Chloroplasts
- B. Lysosomes
- C. Mitochondria
- D. Ribosomes



**20.** What is the function of peristalsis?

- A.** to absorb nutrients into the blood
- B.** to remove excess liquid from the body
- C.** to move food through the digestive system
- D.** to chemically digest food to release nutrients.



**End of Questions**